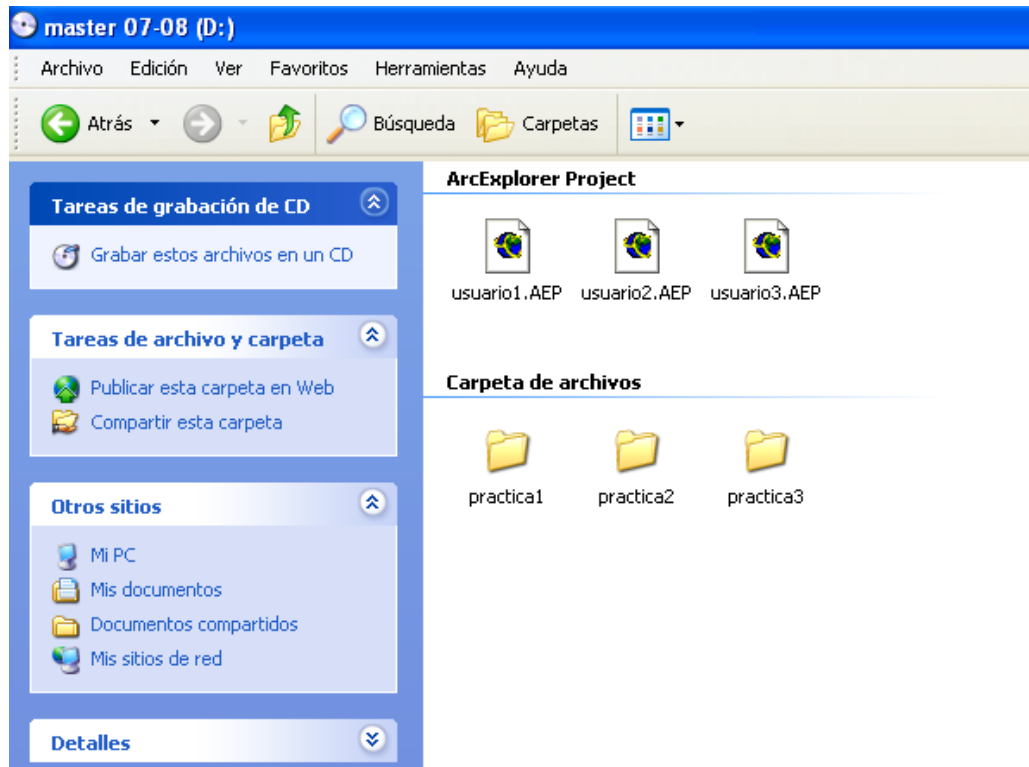
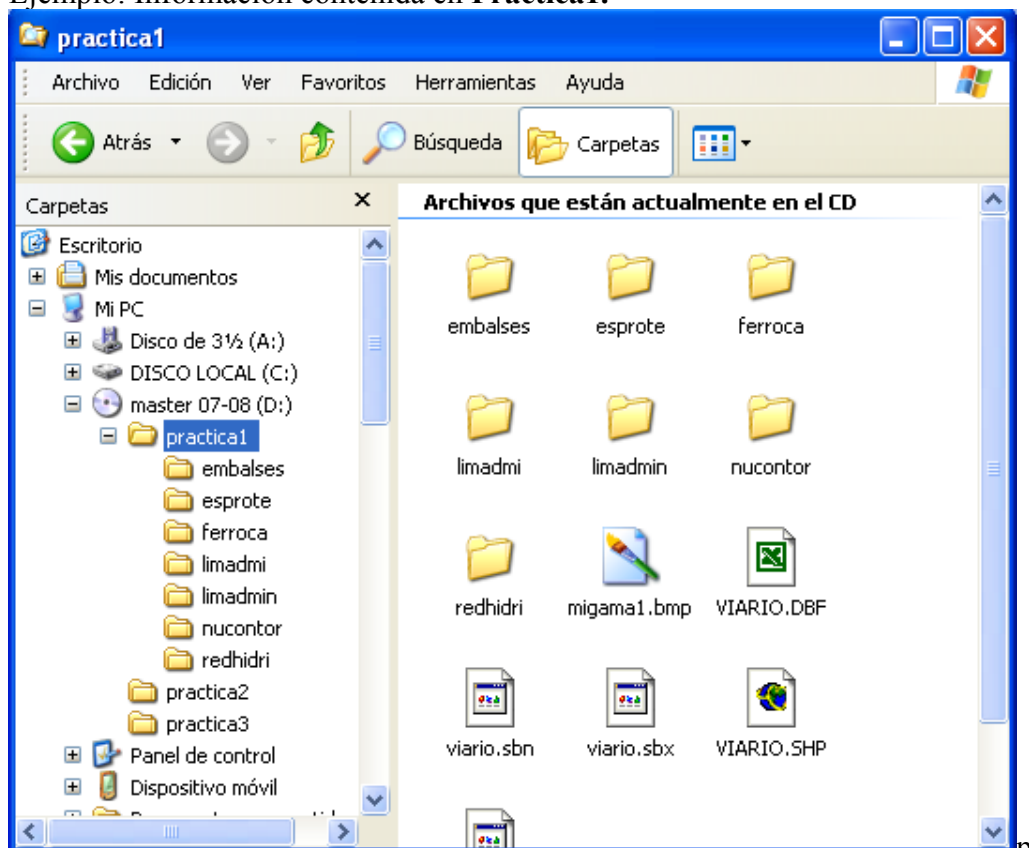


El contenido del CD sería así:

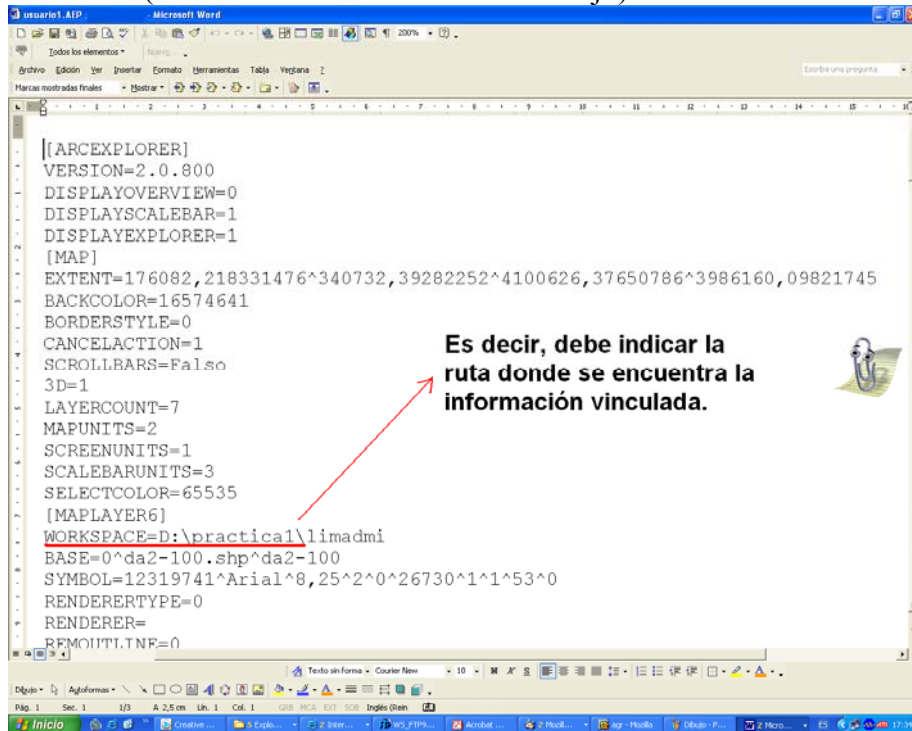


De modo que los Proyectos **usuarioX.aep** llamarían a la información que está contenida en los directorios **Practica1**, **Practica2** y **Practica3** respectivamente:

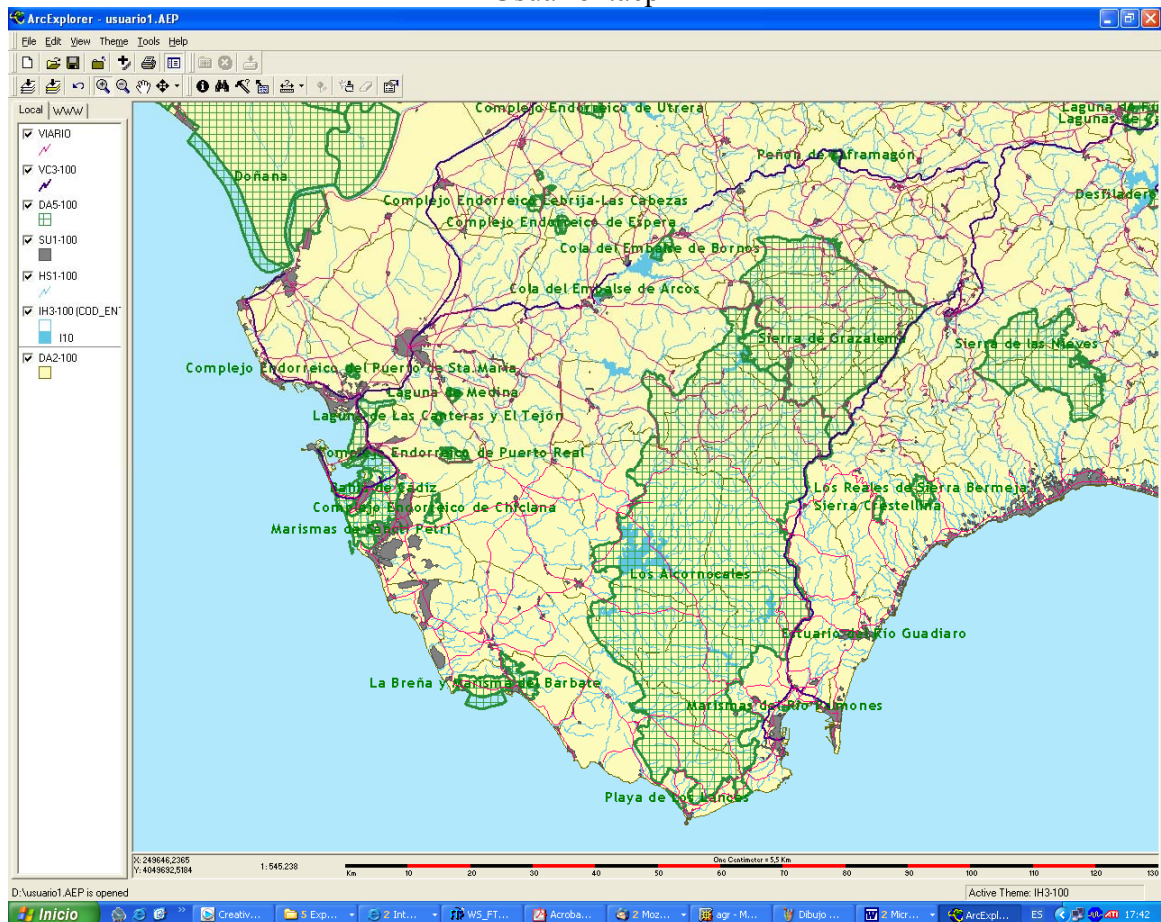
Ejemplo: Información contenida en **Practica1**.



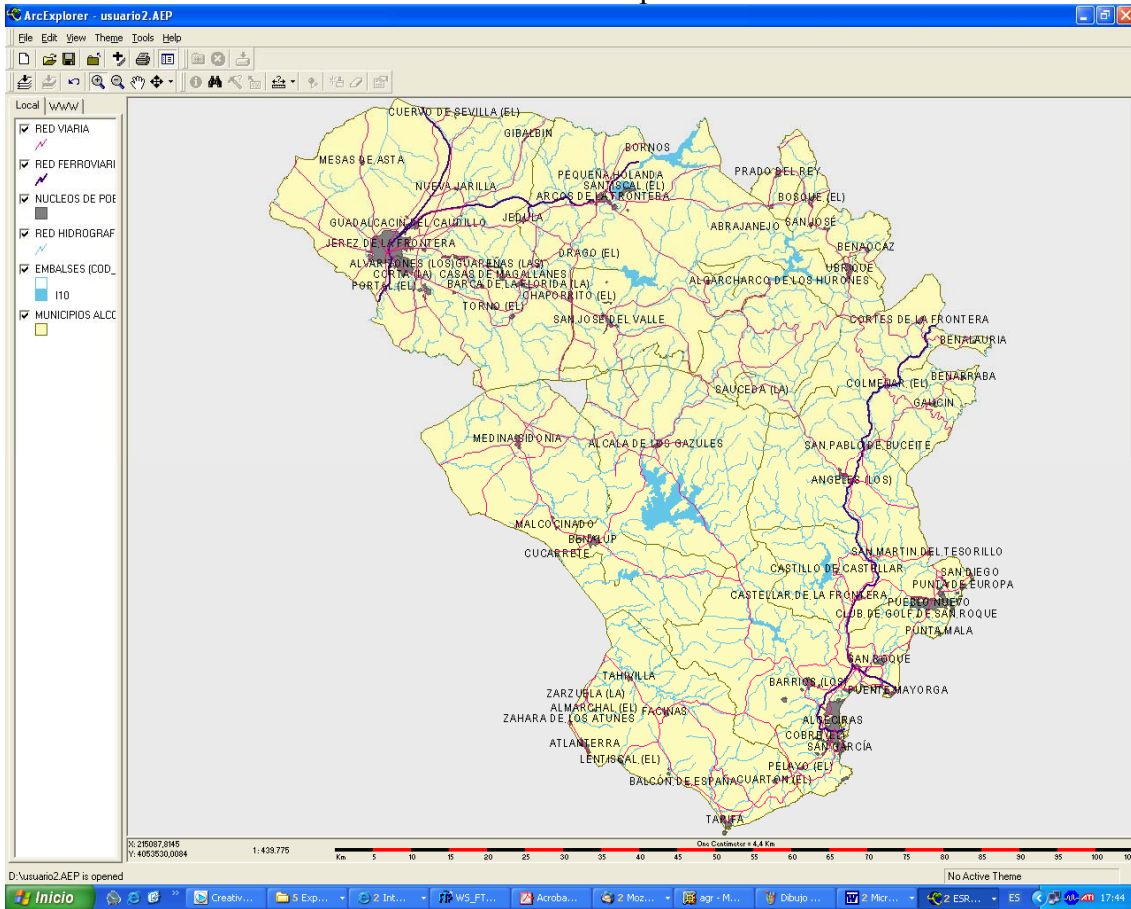
Para ello, el Proyecto Usuario1.aep, debería tener al editarlo el siguiente mandato en su contenido (WORKSPACE = entorno de trabajo).



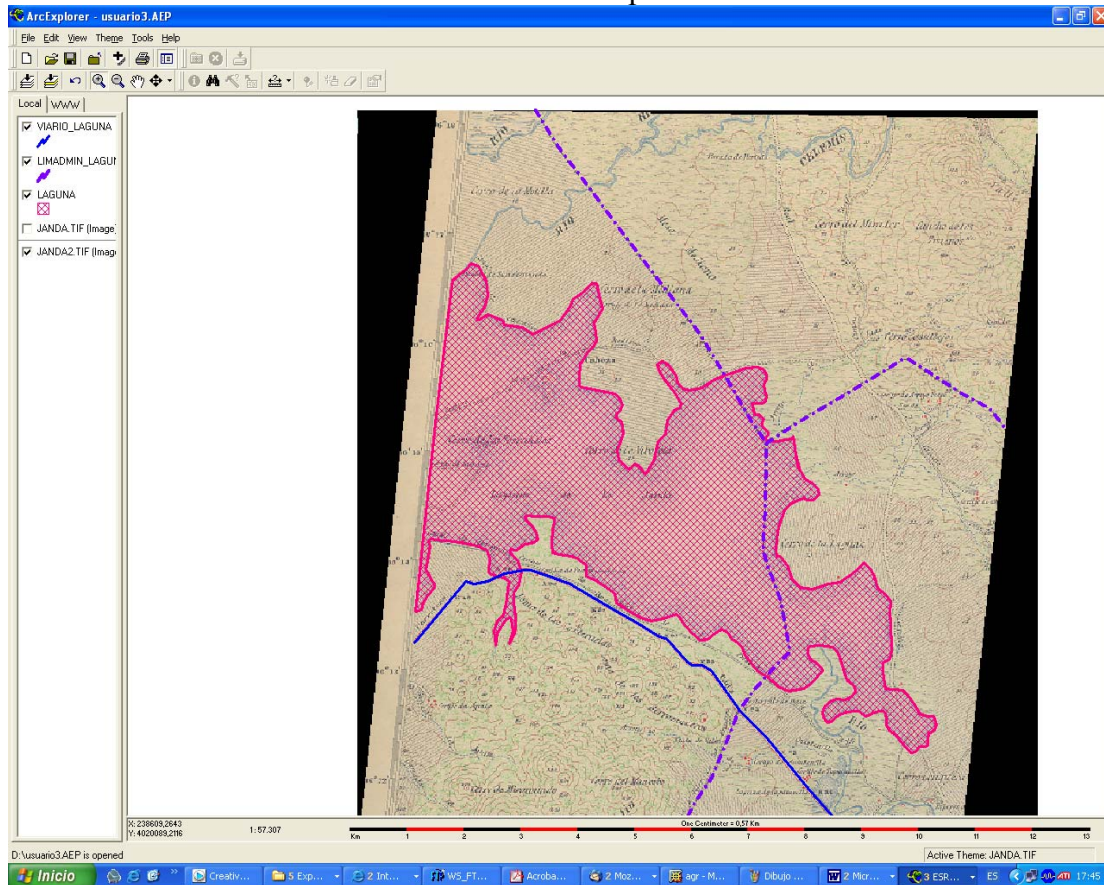
El resultado al ejecutar el proyecto debe ser parecido a lo siguiente:  
Usuario1.aep



# Usuario2.aep

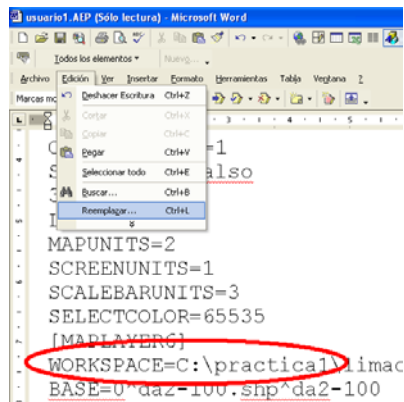


# Usuario3.aep

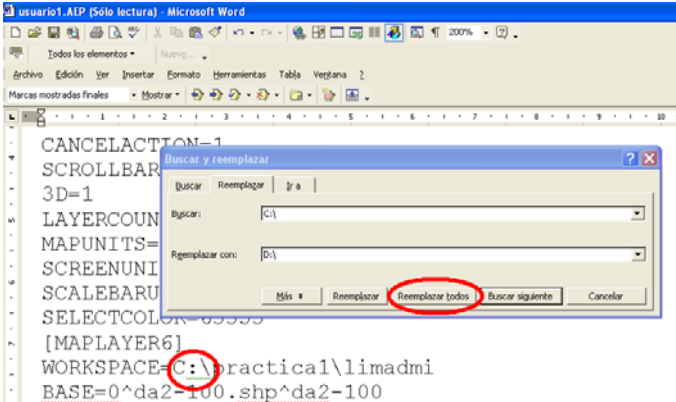


Para lograr el cambio de ruta debemos seguir los siguientes pasos:  
1º **Editar** el proyecto **usuarioX.aep** con un editor de texto (recomiendo word)  
2º **Reemplazar** la ruta del Workspace de la siguiente manera:

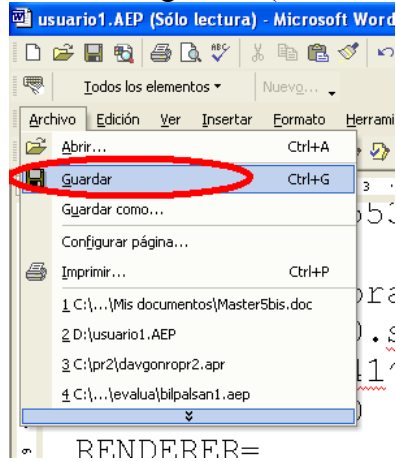
### Paso 1.



### Paso 2



Finalmente guardar (**no** tomar opción "guardar como").



En la siguiente página aparece el contenido de un Project.aep con la información vinculada a C:\ y su modificación posterior a D:\

## Contenido de un Proyecto.aep con la información vinculada a C:\

```
[ARCEXPLORER]
VERSION=2.0.800
DISPLAYOVERVIEW=0
DISPLAYSCALEBAR=1
DISPLAYEXPLORER=1
[MAP]
EXTENT=176082,218331476^340732,39282252^4100626,37650786^3986160,09821
745
BACKCOLOR=16574641
BORDERSTYLE=0
CANCELACTION=1
SCROLLBARS=Also
3D=1
LAYERCOUNT=7
MAPUNITS=2
SCREENUNITS=1
SCALEBARUNITS=3
SELECTCOLOR=65535
[MAPLAYER6]
WORKSPACE=C:\practical\limadmi
BASE=0^da2-100.shp^da2-100
SYMBOL=12319741^Arial^8,25^2^0^26730^1^1^53^0
RENDERERTYPE=0
RENDERER=
REMOUTLINE=0
VISIBLE=1
SCALEFACTORS=0^0

MAPTIPFIELD=
ADDMATCH=^0^
[MAPLAYER5]
WORKSPACE=C:\practical\embalces
BASE=0^ih3-100.shp^ih3-100
SYMBOL=15189603^Arial^8,25^2^1^15189603^0^1^53^0
RENDERERTYPE=1
RENDERERFIELD=COD_ENT
RENDERER=:15189603^Arial^8,25^2^1^15189603^1^1^53^0|I10:15189603^Arial
^8,25^2^0^15189603^1^1^53^0
REMOUTLINE=0
VISIBLE=1
SCALEFACTORS=0^0
MAPTIPFIELD=
ADDMATCH=^0^
[MAPLAYER4]
WORKSPACE=C:\practical\redhidri
BASE=0^hs1-100.shp^hs1-100
SYMBOL=15189603^Arial^8,25^1^0^0^1^1^53^0
RENDERERTYPE=0
RENDERERFIELD=COD_ENT
RENDERER=
REMOUTLINE=0
VISIBLE=1
SCALEFACTORS=0^0
MAPTIPFIELD=
ADDMATCH=^0^
[MAPLAYER3]
WORKSPACE=C:\practical\nucontor
BASE=0^su1-100.shp^su1-100
SYMBOL=8421504^Arial^8,25^2^0^5131854^1^1^53^0
```

```
RENDERERTYPE=0
RENDERERFIELD=COD_ENT
RENDERER=
REMOUTLINE=0
VISIBLE=1
SCALEFACTORS=0^0
MAPTIPFIELD=
ADDMATCH=^0^^^^^^^^^^^^^^
[MAPLAYER2]
WORKSPACE=C:\practical\esprote
BASE=0^da5-100.shp^da5-100
SYMBOL=4498224^Arial^8,25^2^6^3968555^3^1^53^0
RENDERERTYPE=4
RENDERERFIELD=NOMBRE
RENDERER=Trebuchet MS^8^1^0^-
2147483633^0^1^0^0^32768^200^0^0^64^0^1^0^0^0
REMOUTLINE=0
VISIBLE=1
SCALEFACTORS=0^0
MAPTIPFIELD=
ADDMATCH=^0^^^^^^^^^^^^^^
[MAPLAYER1]
WORKSPACE=C:\practical\ferroca
BASE=0^vc3-100.shp^vc3-100
SYMBOL=8388672^Arial^8,25^1^0^0^2^1^53^0
RENDERERTYPE=0
RENDERERFIELD=NOMBRE
RENDERER=
REMOUTLINE=0
VISIBLE=1
SCALEFACTORS=0^0
MAPTIPFIELD=
ADDMATCH=^0^^^^^^^^^^^^^^
[MAPLAYER0]
WORKSPACE=C:\practical
BASE=0^VIARIO.SHP^VIARIO
SYMBOL=8388863^Arial^8,25^1^0^0^1^1^53^0
RENDERERTYPE=0
RENDERERFIELD=NOMBRE
RENDERER=
REMOUTLINE=0
VISIBLE=1
SCALEFACTORS=0^0
MAPTIPFIELD=
ADDMATCH=^0^^^^^^^^^^^^^^
[OVERVIEW]
BASE=0^hs1-100.shp^hs1-100^C:\practical\redhidri^^hs1-100^^
WORKSPACE=0^hs1-100.shp^hs1-100^C:\practical\redhidri^^hs1-100^^
[SCALEBAR]
MAPUNITS=2
SCREENUNITS=1
SCALEUNITS=3
[LEGEND]
SHOWLEGEND0=1
LEGENDACTIVE0=0
SHOWLEGEND1=1
LEGENDACTIVE1=0
SHOWLEGEND2=1
LEGENDACTIVE2=0
SHOWLEGEND3=1
LEGENDACTIVE3=0
```

SHOWLEGEND4=1  
LEGENDACTIVE4=0  
SHOWLEGEND5=1  
LEGENDACTIVE5=1  
SHOWLEGEND6=1  
LEGENDACTIVE6=0  
[AEWEB]  
AEWEBCOUNT=0

Contenido de un Proyecto.aep con la información vinculada a D:\

[ARCEXPLORER]  
VERSION=2.0.800  
DISPLAYOVERVIEW=0  
DISPPLAYSCALEBAR=1  
DISPPLAYEXPLORER=1  
[MAP]  
EXTENT=176082,218331476^340732,39282252^4100626,37650786^3986160,09821  
745  
BACKCOLOR=16574641  
BORDERSTYLE=0  
CANCELACTION=1  
SCROLLBARS=False  
3D=1  
LAYERCOUNT=7  
MAPUNITS=2  
SCREENUNITS=1  
SCALEBARUNITS=3  
SELECTCOLOR=65535  
[MAPLAYER6]  
**WORKSPACE**=D:\practical\limadmi  
BASE=0^da2-100.shp^da2-100  
SYMBOL=12319741^Arial^8,25^2^0^26730^1^1^53^0  
RENDERERTYPE=0  
RENDERER=  
REMOUTLINE=0  
VISIBLE=1  
SCALEFACTORS=0^0  
  
MAPTIPFIELD=  
ADDMATCH=^0^  
[MAPLAYER5]  
**WORKSPACE**=D:\practical\embalses  
BASE=0^ih3-100.shp^ih3-100  
SYMBOL=15189603^Arial^8,25^2^1^15189603^0^1^53^0  
RENDERERTYPE=1  
RENDERERFIELD=COD\_ENT  
RENDERER=:15189603^Arial^8,25^2^1^15189603^1^1^53^0|I10:15189603^Arial  
^8,25^2^0^15189603^1^1^53^0  
REMOUTLINE=0  
VISIBLE=1  
SCALEFACTORS=0^0  
MAPTIPFIELD=  
ADDMATCH=^0^  
[MAPLAYER4]  
**WORKSPACE**=D:\practical\redhidri  
BASE=0^hs1-100.shp^hs1-100  
SYMBOL=15189603^Arial^8,25^1^0^0^1^1^53^0  
RENDERERTYPE=0  
RENDERERFIELD=COD\_ENT

```
RENDERER=
REMOUTLINE=0
VISIBLE=1
SCALEFACTORS=0^0
MAPTIPFIELD=
ADDMATCH=^0^
[MAPLAYER3]
WORKSPACE=D:\practical\nucontor
BASE=0^sul-100.shp^sul-100
SYMBOL=8421504^Arial^8,25^2^0^5131854^1^1^53^0
RENDERERTYPE=0
RENDERERFIELD=COD_ENT
RENDERER=
REMOUTLINE=0
VISIBLE=1
SCALEFACTORS=0^0
MAPTIPFIELD=
ADDMATCH=^0^
[MAPLAYER2]
WORKSPACE=D:\practical\esprote
BASE=0^da5-100.shp^da5-100
SYMBOL=4498224^Arial^8,25^2^6^3968555^3^1^53^0
RENDERERTYPE=4
RENDERERFIELD=NOMBRE
RENDERER=Trebuchet MS^8^1^0^-
2147483633^0^1^0^0^32768^200^0^0^64^0^1^0^0^0
REMOUTLINE=0
VISIBLE=1
SCALEFACTORS=0^0
MAPTIPFIELD=
ADDMATCH=^0^
[MAPLAYER1]
WORKSPACE=D:\practical\ferroca
BASE=0^vc3-100.shp^vc3-100
SYMBOL=8388672^Arial^8,25^1^0^0^2^1^53^0
RENDERERTYPE=0
RENDERERFIELD=NOMBRE
RENDERER=
REMOUTLINE=0
VISIBLE=1
SCALEFACTORS=0^0
MAPTIPFIELD=
ADDMATCH=^0^
[MAPLAYER0]
WORKSPACE=D:\practical
BASE=0^VIARIO.SHP^VIARIO
SYMBOL=8388863^Arial^8,25^1^0^0^1^1^53^0
RENDERERTYPE=0
RENDERERFIELD=NOMBRE
RENDERER=
REMOUTLINE=0
VISIBLE=1
SCALEFACTORS=0^0
MAPTIPFIELD=
ADDMATCH=^0^
[OVERVIEW]
BASE=0^hs1-100.shp^hs1-100^D:\practical\redhidri^hs1-100^
WORKSPACE=0^hs1-100.shp^hs1-100^D:\practical\redhidri^hs1-100^
[SCALEBAR]
MAPUNITS=2
SCREENUNITS=1
```

SCALEUNITS=3  
[LEGEND]  
SHOWLEGEND0=1  
LEGENDACTIVE0=0  
SHOWLEGEND1=1  
LEGENDACTIVE1=0  
SHOWLEGEND2=1  
LEGENDACTIVE2=0  
SHOWLEGEND3=1  
LEGENDACTIVE3=0  
SHOWLEGEND4=1  
LEGENDACTIVE4=0  
SHOWLEGEND5=1  
LEGENDACTIVE5=1  
SHOWLEGEND6=1  
LEGENDACTIVE6=0  
[AEWEB]  
AEWEBCOUNT=0